

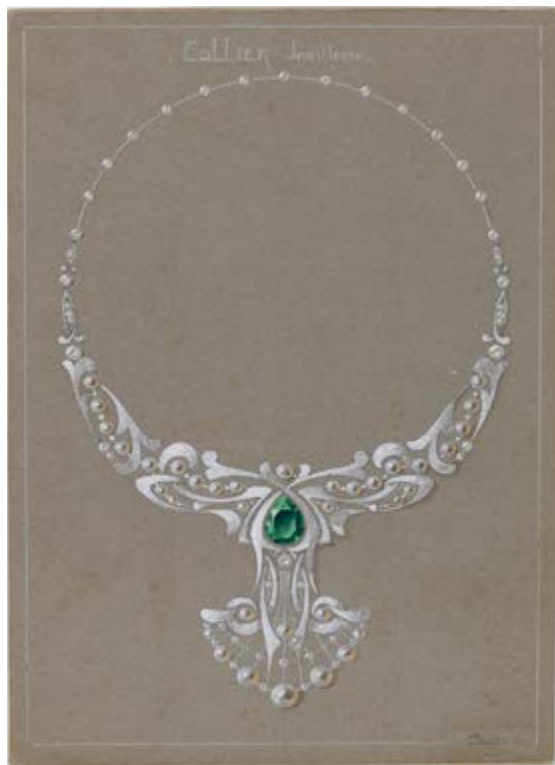


Petit Palais  
Musée des Beaux-Arts  
de la Ville de Paris

# Jewellery Designs

## *Secrets of the creation*

1 April – 20 July 2025



Raymond Subes, *Necklace*, 1910s. Graphite pencil and gouache on grey paper, 23.8 x 16 cm.  
Petit Palais, Musée des Beaux-Arts de la Ville de Paris. Purchase, 2007.  
ADAGP, Paris, 2025, Raymond Subes - Paris Musées / Petit Palais, Musée des Beaux-Arts de la Ville de Paris.

For the first time, the Petit Palais reveals the diversity and breadth of its collection of drawings of jewellery designs, spanning over a century of creation, from the second half of the 19<sup>th</sup> to the mid-20<sup>th</sup> century. Through a remarkable selection of designs from a collection comprising over 5,500 works, this exhibition showcases the wealth of a collection amassed since the late 1990s and preserved in the museum's reserves, away from the public spotlight. Featuring drawings by designers like Pierre-Georges Deraisme and Charles Jacquau, as well as those by prestigious jewellery houses such as Boucheron, Cartier, Rouvenat, and Vever, this exhibition bears witness to the evolution of styles and techniques in the field of jewellery. It is part of an original programme, aimed at highlighting the Petit Palais' exceptional graphic art collection.

*Jewellery Designs* offers an immersive journey through the process of jewellery creation in an exhibition structured around four main sections.

The visitor is invited to dive into the imaginary universe of jewellery designers who draw their inspiration directly from the observation of nature, as well as collections of ornaments representing decorative forms from different epochs and regions of the world. Sketchpads,

### Press release

February 2025

#### GENERAL CURATOR

Annick Lemoine, Head Curator,  
Director of the Petit Palais.

#### SCIENTIFIC CURATOR

Clara Roca, Curator of the Post-1800 Graphic Arts and Photography Collections.

#### PRESS CONTACTS

Mathilde Beaujard  
[mathilde.beaujard@paris.fr](mailto:mathilde.beaujard@paris.fr)  
+33 (0)1 53 43 40 14  
+33 (0)6 45 84 43 35

Ximun Diharce  
[ximun.diharce@paris.fr](mailto:ximun.diharce@paris.fr)  
+33 (0)1 53 43 40 23



plates of motifs, and books all transport the visitor to a range of highly imaginative repertoires.

The exhibition is also intended to be educational, shedding light on the distinct stages of creating a jewellery item: from the quick sketch to the final coloured drawing, done on a scale of 1:1. This second section examines the way in which technical rigor and artistic intuition are combined in the design of these precious objects. A selection of exquisite gouache drawings highlights the Art Nouveau and Art Deco movements. A video shot at the Haute École de Joaillerie in Paris demonstrates the precise and timeless gestures of gouache artists, thus highlighting the beauty and skill of their expertise.

Veritable collective works, jewellery pieces are born from the collaboration of numerous artisans: designers, modelers, engravers, chasers, piercers, enamellers, jewellers, setters, threaders, and polishers. The third section of the exhibition represents this synergy, by exhibiting the design drawings alongside the finished jewels, some of which come from the Petit Palais Collections, like the "Sycamore Pendant" (1910) or the "Insect Ring" (1903) by Georges Fouquet. This dialogue between paper and metal reveals the complexity of the contribution of each of the artisans involved, and the overall beauty of the creative process.

Jewellery designs, often more durable than the jewellery items themselves, continue to live on, both as valuable archives and as sources of inspiration for future creators. This final part of the exhibition invites the public to reflect on how these artworks on paper have survived time and retain their vital role in the world of jewellery. A selection of jewellery from the Petit Palais Collections closes the exhibition. These rarely exhibited parures or sets, presented alongside portraits of elegant women, allow visitors to continue their discovery of this fascinating world.

#### GENERAL INFORMATION

PETIT PALAIS - MUSÉE DES  
BEAUX-ARTS DE LA VILLE DE PARIS  
Avenue Winston-Churchill,  
75008 Paris  
Tel : +33 (0)1 53 43 40 00  
[petitpalais.paris.en](http://petitpalais.paris.en)

Tuesday to Sunday from 10:00 a.m to  
6:00 pm

Late opening on Friday and Saturday  
until 8:00 pm

#### ADMISSION

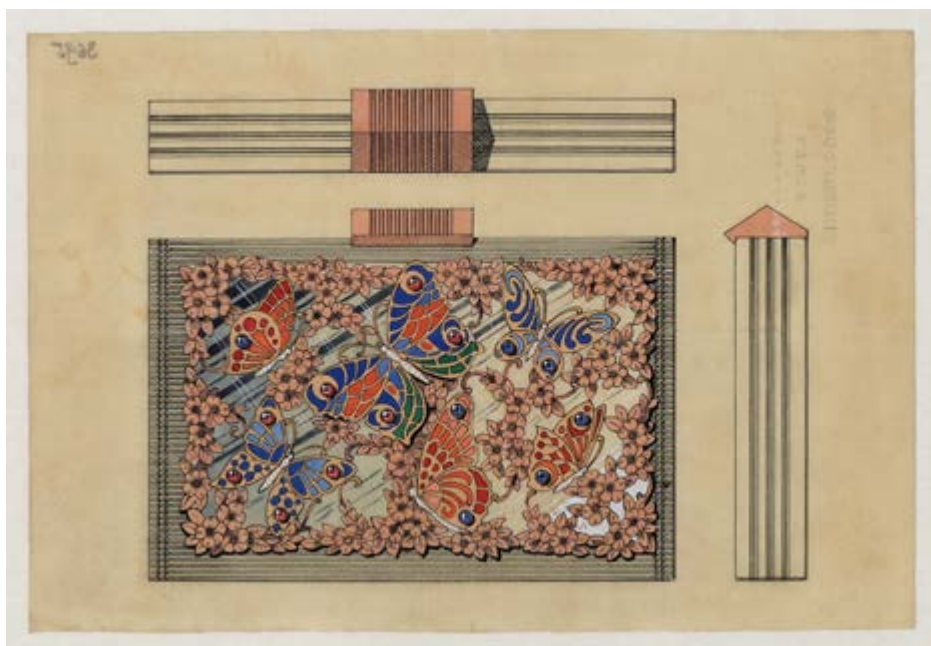
Full rate : 14 €

Reduced rate : 12 €

Reservation of a recommended visit  
time on [petitpalais.paris.en](http://petitpalais.paris.en)

Accessible to people with  
disabilities.

With the support of



Unidentified draughtsman for Boucheron, *Butterfly set*, circa 1945. Graphite pencil, ink and gouache on the front, ink and gouache on the reverse on translucent wove paper, 14.8 × 21.9 cm. Boucheron Paris. Registered designs. Petit Palais, Musée des Beaux-Arts de la Ville de Paris. Purchase from the arrears of the Dutuit bequest, 2002. CC0 Paris Musées / Petit Palais, Musée des Beaux-Arts de la Ville de Paris.